

# COLDSTREAM



EXCEPTIONAL PERFORMANCE PRODUCTS FOR ANY EQUESTRIAN ATHLETE

# INTRODUCTION

---

Coldstream is an equestrian brand inspired by the legendary showjumper Hydrophane Coldstream. The Coldstream range, like the horse, reflects high quality and performance, delivering innovative, technical, and on trend pieces.

Offering contemporary and timeless rider apparel that is engineered to make a difference for any equestrian athlete, Coldstream delivers exceptional performance products and strives to meet the ever-evolving demands of the modern-day rider.





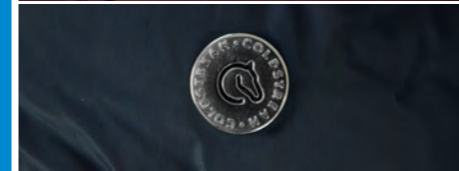
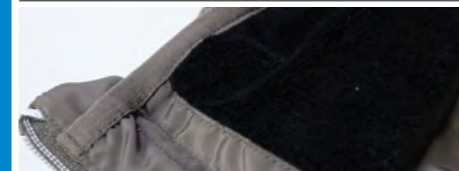
2 WAY ZIP



MACHINE WASHABLE

FAUX DUCK  
FEATHER DOWN

INSULATION

STORM BREAK  
COLLARFUR INNER  
COLLAR

### Coldstream Kimmerston Long Quilted Coat

**Size/Code:** X Small, Small, Medium, Large, X Large  
**Colour:** Windsor Wine

**Size/Code:** X Small, Small, Medium, Large, X Large  
**Colour:** Navy

**Size/Code:** X Small, Small, Medium, Large, X Large  
**Colour:** Taupe

**RRP:** £154.99

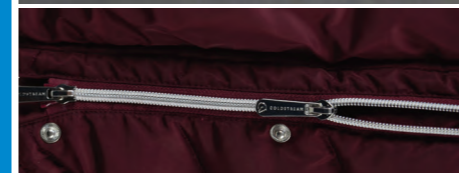
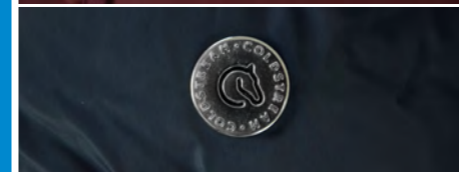
- Premium faux duck down feather quilted panels for exceptional warmth.
- High storm breaker collar keeping wind chill at bay.
- Dual purpose use for riding & leisure wear.
- Long line truly flattering fit for a sophisticated look this winter.
- Luxury faux fur neck trim.
- Fleece lined zip pockets.
- Hidden inside chest pocket.
- Full length two way zip and back zip.



2 WAY ZIP

MACHINE  
WASHABLEFAUX DUCK  
FEATHER DOWN

INSULATION

STORM BREAK  
COLLARFUR INNER  
COLLAR

### Coldstream Kimmerston Quilted Coat

**Size/Code:** X Small, Small, Medium, Large, X Large  
**Colour:** Windsor Wine

**Size/Code:** X Small, Small, Medium, Large, X Large  
**Colour:** Navy

**Size/Code:** X Small, Small, Medium, Large, X Large  
**Colour:** Taupe

**RRP:** £109.99

- Premium faux duck down feather quilted panels for exceptional warmth.
- High storm breaker collar keeping wind chill at bay.
- Crafted from lightweight breathable material for practicality.
- Dual purpose use for riding & leisure wear.
- Two way zip and side back zips for ease of use whilst riding.
- Luxury faux fur neck trim.
- Fleece lined zip pockets.
- Hidden inside chest pocket.



2 WAY ZIP



MACHINE WASHABLE



FAUX DUCK FEATHER DOWN



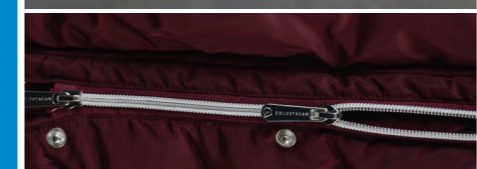
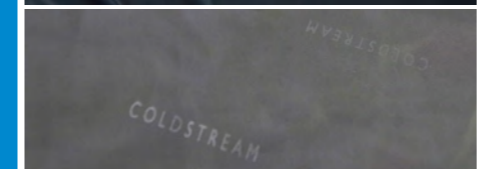
INSULATION



STORM BREAK COLLAR



FUR INNER COLLAR



### Coldstream Kimmerston Quilted Gilet

**Size/Code:** X Small, Small, Medium, Large, X Large  
**Colour:** Windsor Wine

**Size/Code:** X Small, Small, Medium, Large, X Large  
**Colour:** Navy

**Size/Code:** X Small, Small, Medium, Large, X Large  
**Colour:** Taupe

RRP: £79.99

- Perfect to layer over a Coldstream Baselayer when the weather is cooler.
- Premium faux duck down feather quilted panels for ultimate warmth and comfort.
- High storm breaker collar keeping wind chill at bay.
- Two way zip and side back zips for dual purpose - riding and leisure wear.
- Luxury faux fur neck trim.
- Fleece lined zip pockets.
- Hidden inside chest pocket.



2 WAY ZIP



MACHINE WASHABLE



FAUX DUCK FEATHER DOWN



INSULATION



DETACHABLE FAUX FUR



FUR INNER COLLAR



**Coldstream Branxton Long Quilted Coat**

Size/Code: X Small, Small, Medium, Large, X Large  
Colour: Black

RRP: £169.99

- Quilted panels for exceptional warmth.
- Detachable premium faux fur around the hood.
- Luxury faux fur neck trim.
- Elasticated belt for extra security, shaping and style.
- Two-way zip and back zip to allow the coat to be used during riding.
- Gold buttons and zips for a classy finish.
- Coldstream logo on the chest and the collar.



2 WAY ZIP



MACHINE WASHABLE



FAUX DUCK FEATHER DOWN



INSULATION

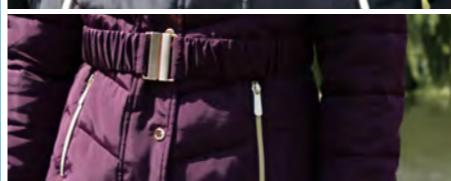
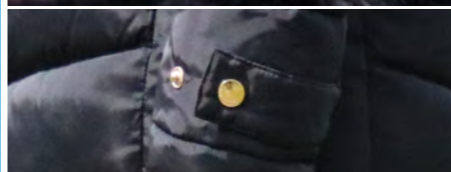
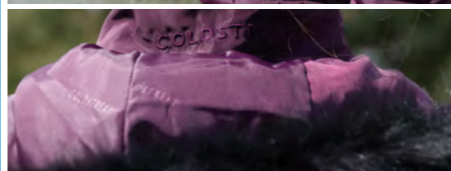


DETACHABLE FAUX FUR



FUR INNER COLLAR

coldstreamequestrian.com



### Coldstream Cornhill Quilted Coat

**Size/Code:** X Small, Small, Medium, Large, X Large  
**Colour:** Black

**Size/Code:** X Small, Small, Medium, Large, X Large  
**Colour:** Mulberry Purple

**RRP:** £119.99

- Quilted panels for exceptional warmth.
- Detachable premium faux fur around the hood.
- Luxury faux fur neck trim.
- Elasticated belt for extra security, shaping and style.
- Two-way zip and side back zips to allow the coat to be used during riding.
- Gold buttons and zips for a classy finish.
- Coldstream logo on the chest and the collar.



2 WAY ZIP



MACHINE WASHABLE



FAUX DUCK FEATHER DOWN



INSULATION



DETACHABLE FAUX FUR



FUR INNER COLLAR



### Coldstream Leitholm Quilted Gilet

Size/Code: X Small, Small, Medium, Large, X Large

Colour: Black

RRP: £84.99

- Quilted panels for exceptional warmth – perfect for wearing over a Coldstream baselayer in cooler weather.
- Detachable premium faux fur around the hood.
- Luxury faux fur neck trim.
- Two-way zip and side back zips to allow the gilet to be used during riding.
- Gold buttons and zips for a classy finish.
- Coldstream logo on the chest and the collar.





4 WAY STRETCH



BREATHABLE



THUMB HOLE CUFFS



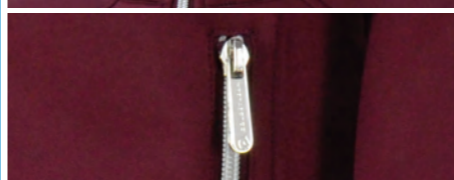
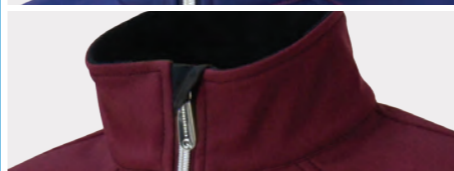
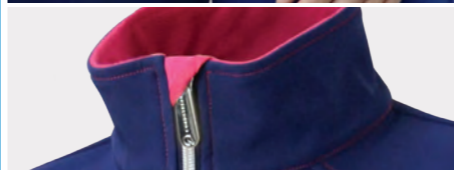
WICKING PROPERTIES



2 WAY ZIP



MATCHING ITEMS AVAILABLE



### Coldstream Berwick Softshell Jacket

**Size/Code:** X Small, Small, Medium, Large, X Large

**Colour:** Navy/Raspberry Sorbet

**Size/Code:** X Small, Small, Medium, Large, X Large

**Colour:** Windsor Wine/Black

**Size/Code:** X Small, Small, Medium, Large, X Large

**Colour:** Black

**RRP:** £89.99

- Shower and windproof keeping wind chill at bay.
- 4-way stretch with micro fleece for breathability and heat retention.
- Lycra windshield thumb hole cuffs.
- Engineered for performance.
- Moisture wicking properties.
- Colour match fleece inner for warmth.
- Matches with garments in the Coldstream Collection.



MACHINE WASHABLE



4 WAY STRETCH



BREATHABLE



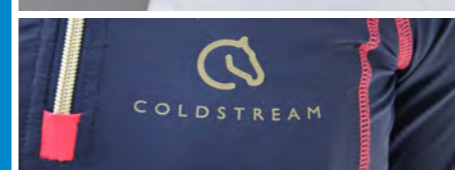
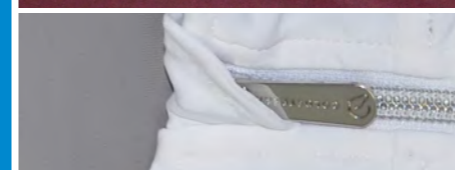
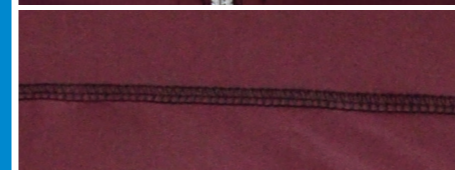
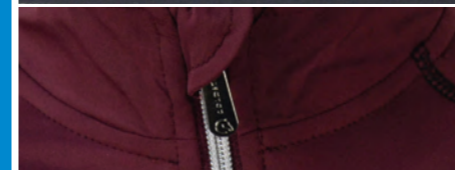
FLAT LOCK SEAMS



WICKING PROPERTIES



MATCHING ITEMS AVAILABLE



### Coldstream Lennel Base Layer

**Size/Code:** X Small, Small, Medium, Large, X Large  
**Colour:** Navy/Raspberry Sorbet

**Size/Code:** X Small, Small, Medium, Large, X Large  
**Colour:** Windsor Wine/Black

**Size/Code:** X Small, Small, Medium, Large, X Large  
**Colour:** Black

**Size/Code:** X Small, Small, Medium, Large, X Large  
**Colour:** White/Light Grey

**Size/Code:** X Small, Small, Medium, Large, X Large  
**Colour:** Grey/Black

**RRP:** £39.99

- Tailored fit for a sleek and stylish look.
- Reflective Coldstream branding.
- Soft breathable fabric.
- Technical moisture wicking properties.
- Ideal for performance riding and everyday wear.
- Super soft seams with flat-lock stitching for a comfortable fit
- Matches with garments in the Coldstream Collection.



MACHINE WASHABLE



4 WAY STRETCH



BREATHABLE



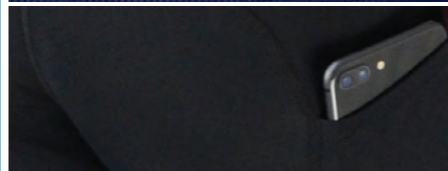
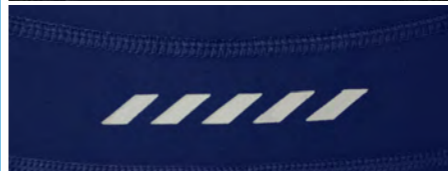
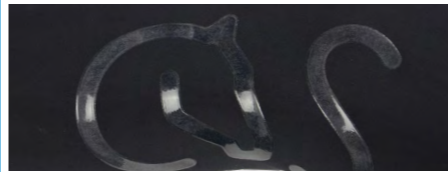
PHONE POCKET



SUPER TECH SILICONE SYSTEM



MATCHING ITEMS AVAILABLE



### Coldstream HIIT Riding Skins

**Size/Code:** X Small, Small, Medium, Large, X Large  
**Colour:** Black/Windsor Wine

**Size/Code:** X Small, Small, Medium, Large, X Large  
**Colour:** Navy/Raspberry Sorbet

**RRP:** £49.99

- Designed to enhance performance in the saddle.
- 4-way stretch fabric.
- Coldstream branded silicone knee patches.
- Reflective detailing on waistband.
- Phone pocket on side of leg.
- Matches perfectly with garments in the Coldstream Collection.



MACHINE WASHABLE



4 WAY STRETCH



BREATHABLE



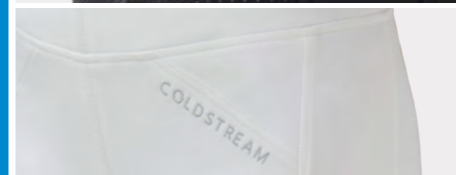
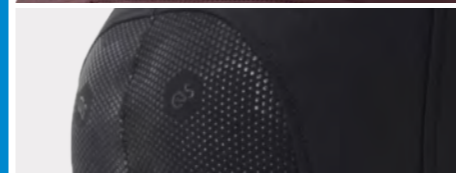
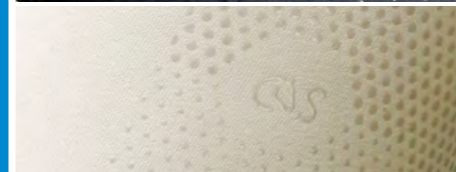
SUPER TECH SILICONE SYSTEM



WICKING PROPERTIES



MATCHING ITEMS AVAILABLE



### Coldstream Kelso Riding Skins

**Size/Code:** 24", 26", 28", 30", 32", 34"

**Colour:** Windsor Wine

**Size/Code:** 24", 26", 28", 30", 32", 34"

**Colour:** Black

**Size/Code:** 24", 26", 28", 30", 32", 34"

**Colour:** Beige

**Size/Code:** 24", 26", 28", 30", 32", 34"

**Colour:** White

**RRP:** £99.99

- Technical durable fabric.
- Unrivalled 4-way stretch.
- Smooth line pro fit system, with high waists to give the ultimate streamline look.
- Quick drying function.
- Full seat Super Tech Silicone System.



4 WAY STRETCH



SUPER TECH SILICONE SYSTEM



BREATHABLE



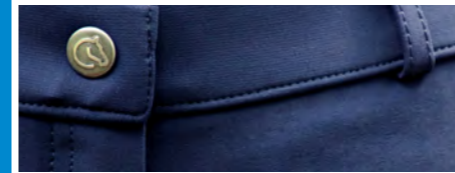
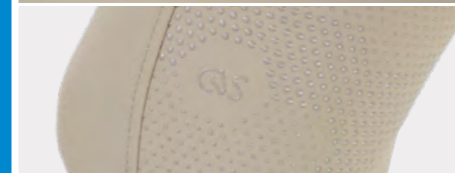
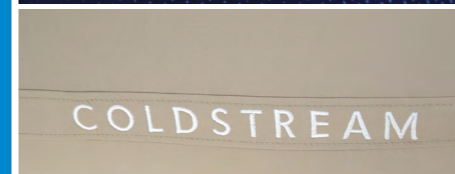
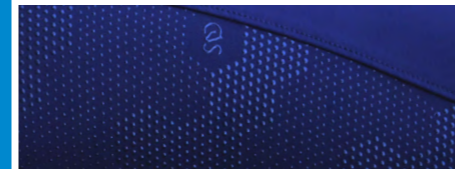
LIGHT WEIGHT



DURABLE TECHNOLOGY



WICKING PROPERTIES



### Coldstream Kilham Competition Breeches

Size/Code: 24", 26", 28", 30", 32", 34"

Colour: White

Size/Code: 24", 26", 28", 30", 32", 34"

Colour: Navy

Size/Code: 24", 26", 28", 30", 32", 34"

Colour: Taupe

RRP: £119.99

- C-Shape Tech contours your figure for optimal performance and comfort.
- Powerful 4-way stretch for unrivalled flexibility and comfort.
- Lightweight competition breech.
- Extreme breathability and ventilation.
- Durable Lycra Xtra life fibre technology.
- Full seat Super Tech Silicone System.



MACHINE WASHABLE



4 WAY STRETCH



BREATHABLE



DIAMANTES

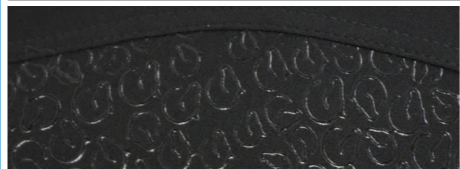


MATCHING ITEMS AVAILABLE



SUPER TECH SILICONE SYSTEM

coldstreamequestrian.com



### Coldstream Learmouth Ladies Breeches

Size/Code: 24", 26", 28", 30", 32", 34"

Colour: Navy/Raspberry Sorbet

Size/Code: 24", 26", 28", 30", 32", 34"

Colour: Black/Windsor Wine

RRP: £79.99

- Full silicone secure seat.
- 4 way stretch.
- No bulk elastic stretch hem ankles for maximum comfort.
- Diamante pocket detailing.
- Striking two tone contrast.
- Matches perfectly with garments in the Coldstream Collection.
- Flat lock seams.



### Coldstream Baseball Cap

**Size/Code:** One Size  
**Colour:** Grey/Blue

**RRP:** £9.99

- Elite Coldstream Collection.
- Compliments the clothing range.
- Breathable, ventilated mesh panel.
- Smart top-stitching.
- Adjustable fit.



ADJUSTABLE  
FIT



BREATHABLE



MACHINE  
WASHABLE



4 WAY  
STRETCH



BREATHABLE



ANTIBACTERIAL



WICKING  
PROPERTIES



MATCHING ITEMS  
AVAILABLE



### Coldstream Pawston Performance Socks

**Size/Code:** Adult 4-8  
**Colour:** Black

**Size/Code:** Adult 4-8  
**Colour:** Black/Windsor Wine

**Size/Code:** Adult 4-8  
**Colour:** Navy/Raspberry Sorbet

**Size/Code:** Adult 4-8  
**Colour:** Navy

**RRP:** £11.99

- Dynamic stretch technology.
- Anti-Bacterial fabric.
- Moisture wicking properties.
- Lightweight and breathable.
- Ideal for wearing with breeches and riding boots.
- Sleek slim fit for maximum comfort under riding boots.
- Matches perfectly with garments in the Coldstream Collection.

COLDSTREAM